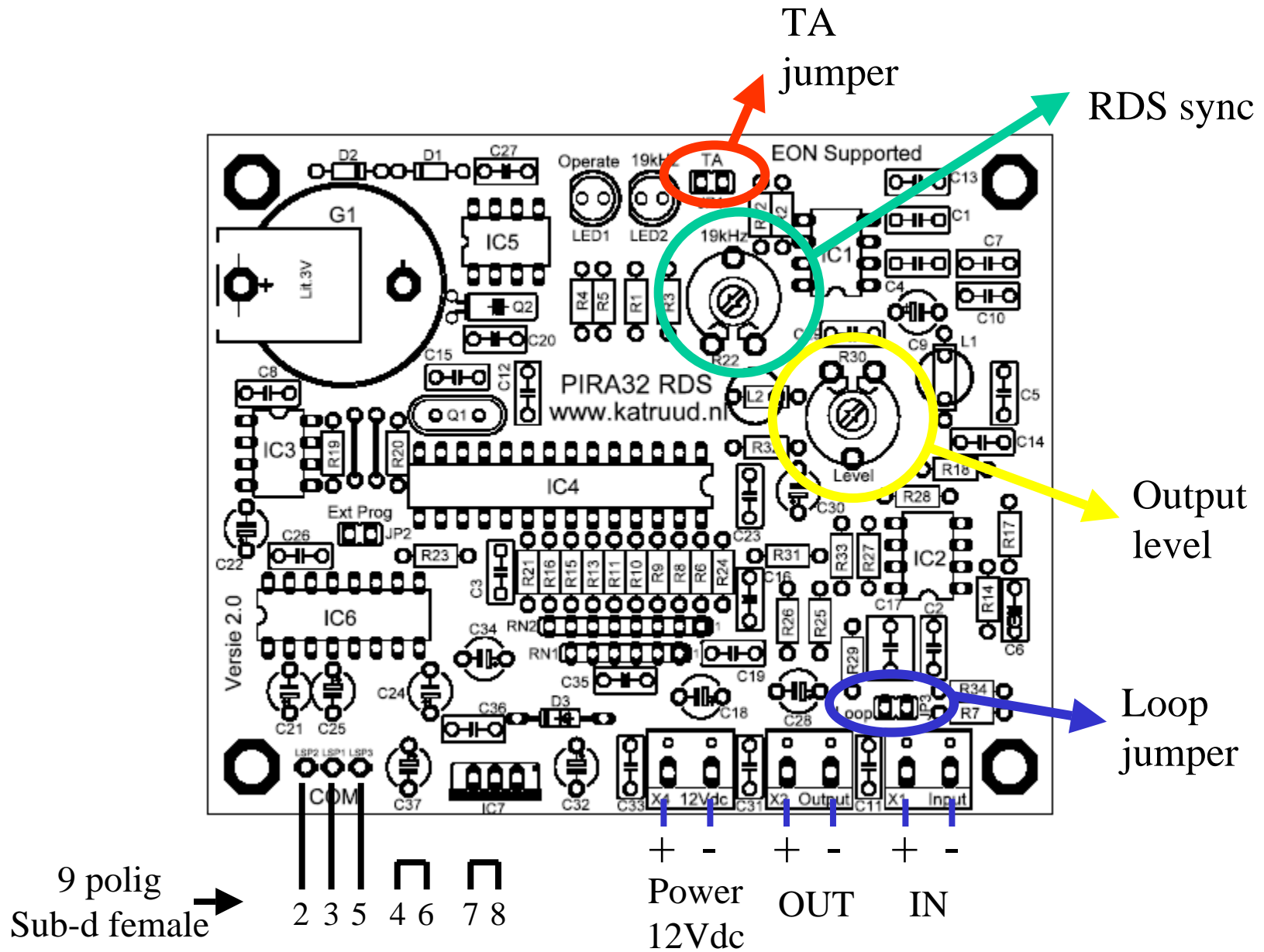
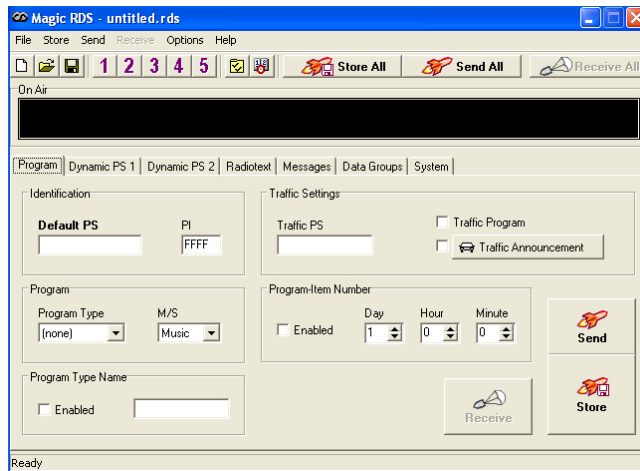


KatRuud/Pira32 RDS Versie 2.0

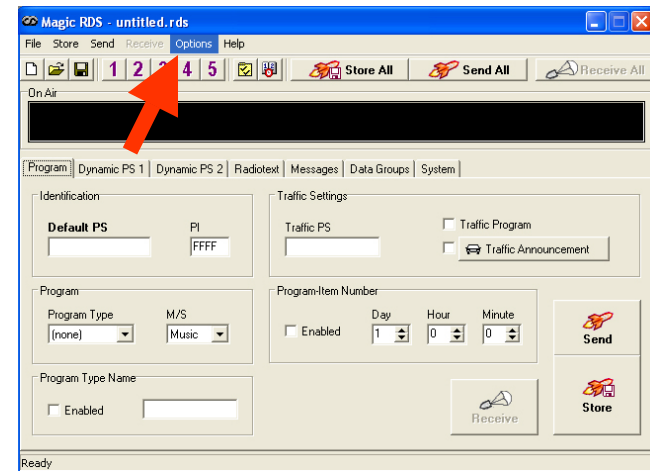


Software start op in de “demo mode”, de poort moet worden ingesteld

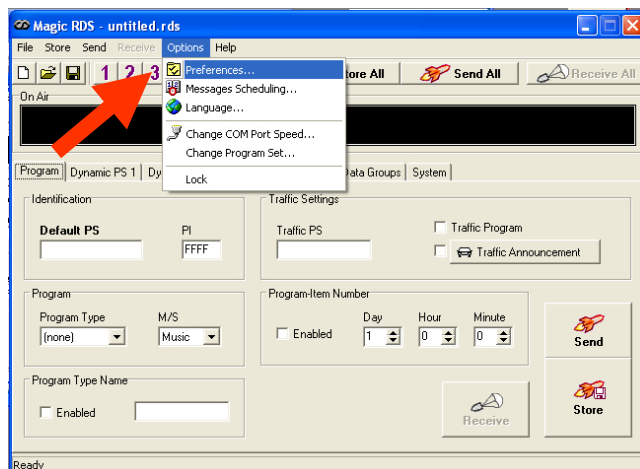
Start scherm



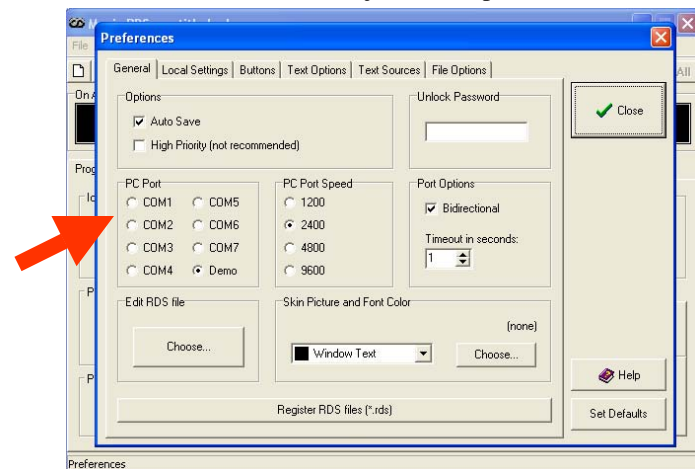
Ga naar options



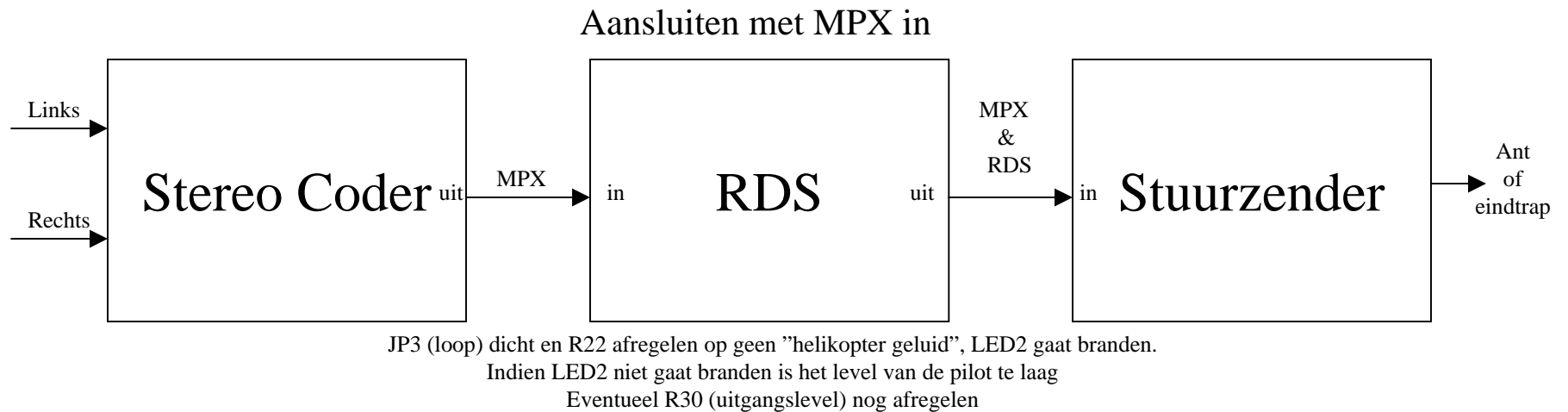
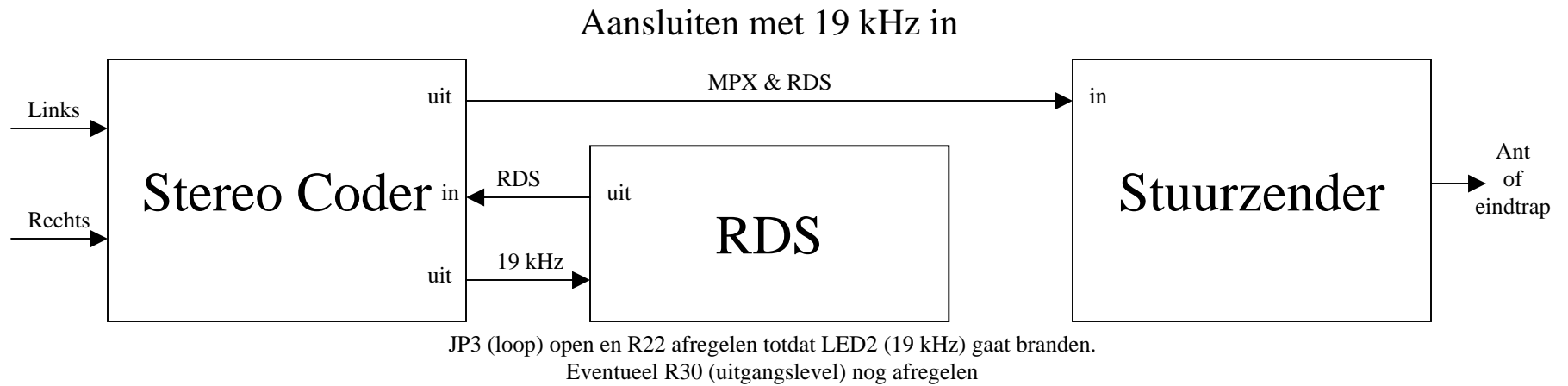
Selecteer Preferences



Selecteer de juiste com poort



Software is nu gereed voor gebruik



Benodigde kabel voor aansluiten RDS op de PC is een 1 op 1 kabel (ook wel muis verlengkabel genoemd).

Fase is in de software nog fijn te regelen!!