

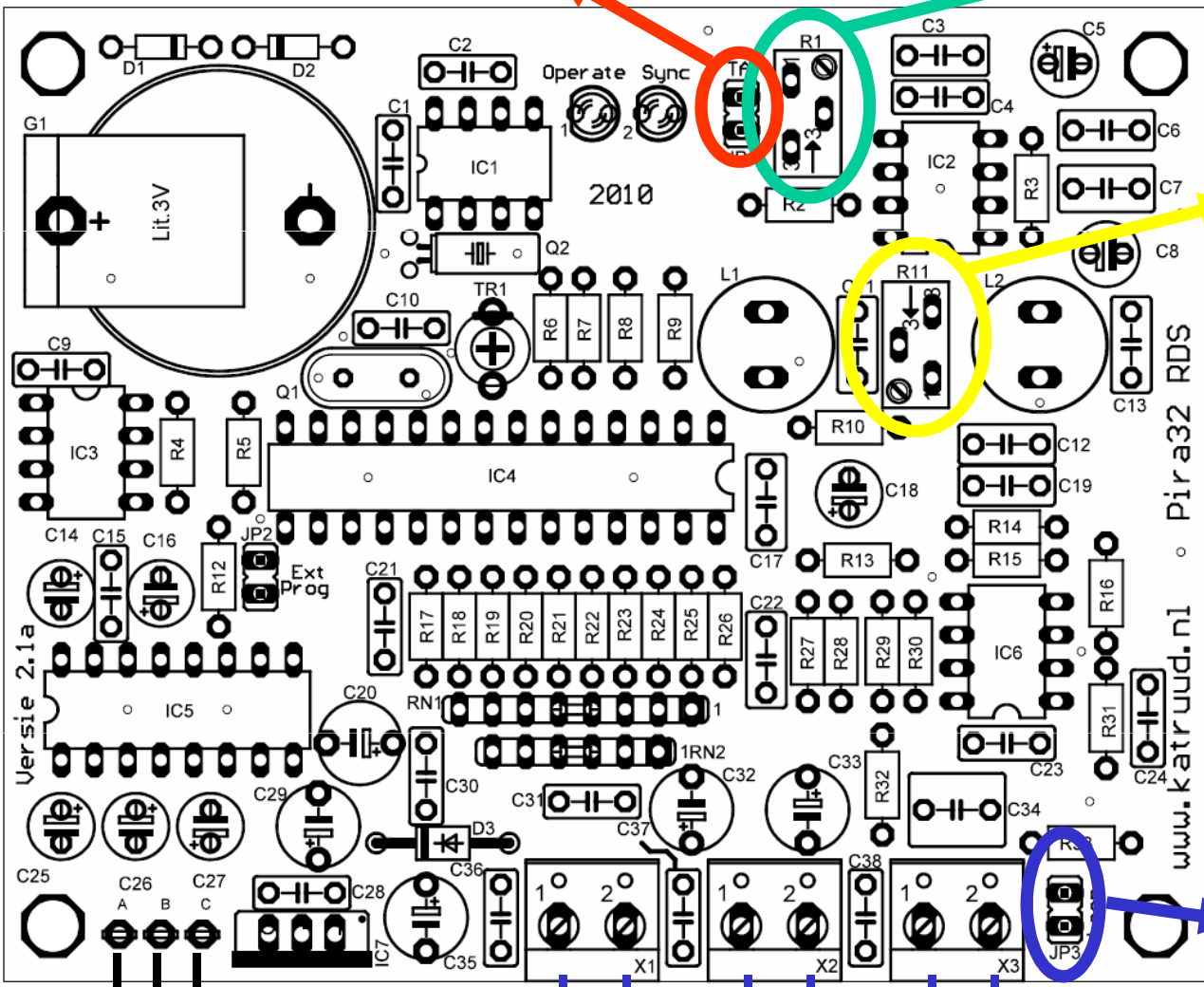
KatRuud/Pira32 RDS Versie 2.1a

TA jumper

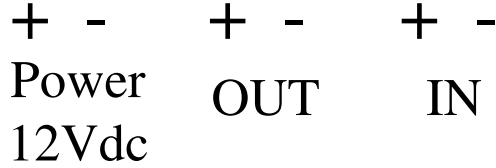
RDS sync

Output level

Loop jumper



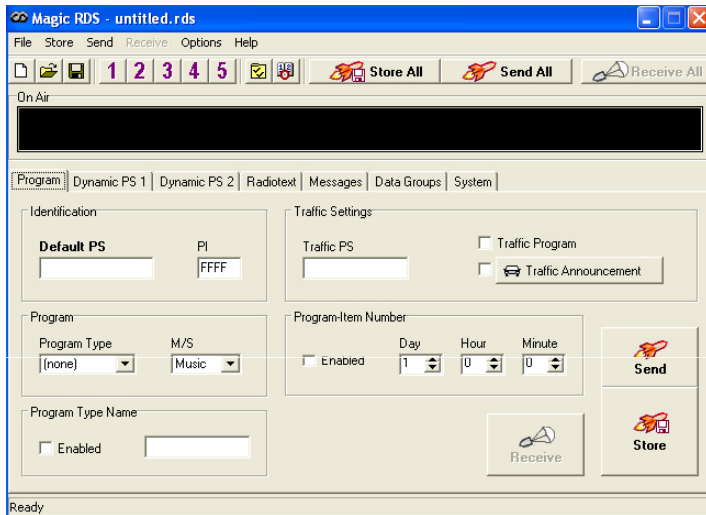
9 polig Sub-d female →



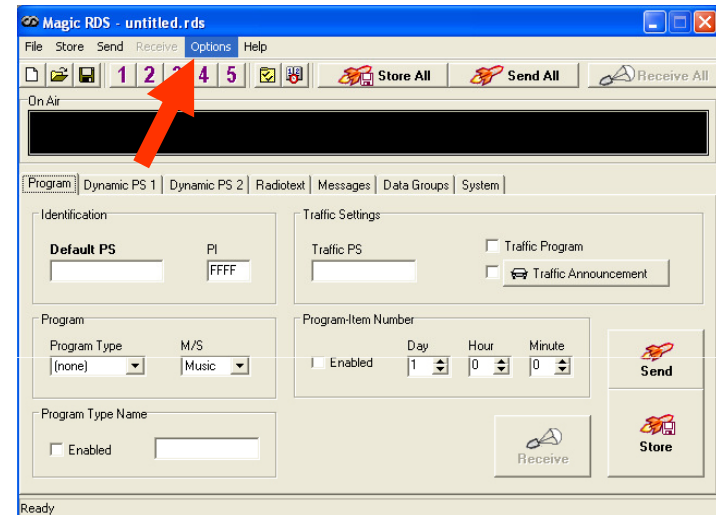
www.katruud.nl Pira32 RDS

Software start op in de “demo mode”, de poort moet worden ingesteld

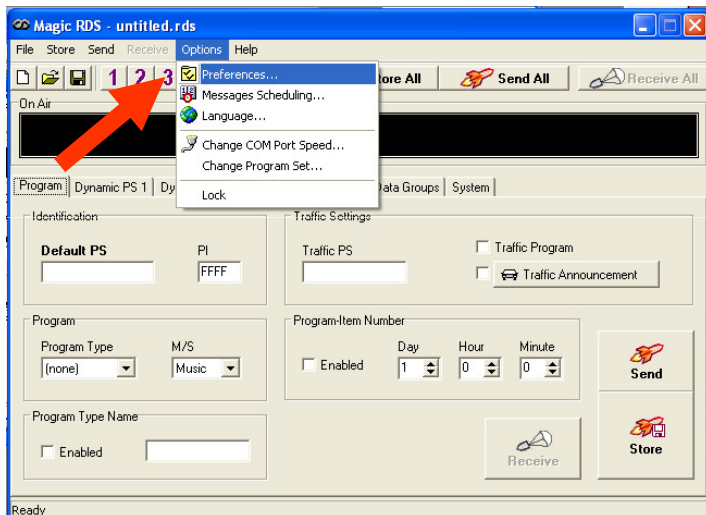
Start scherm



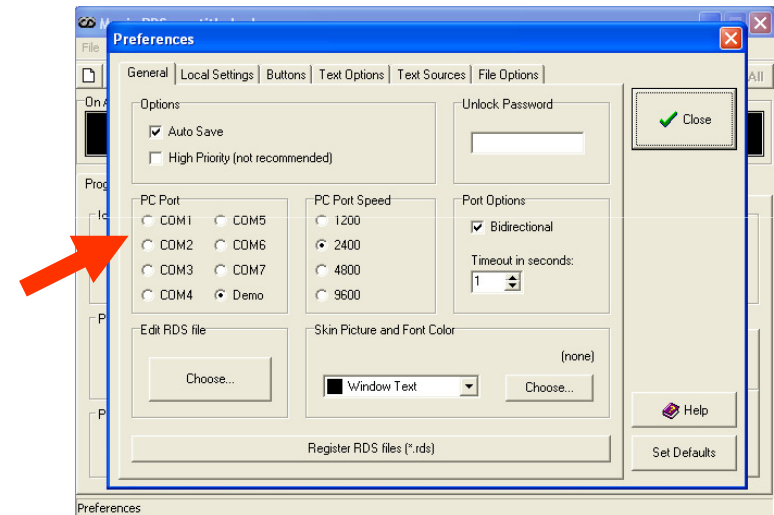
Ga naar options



Selecteer Preferences

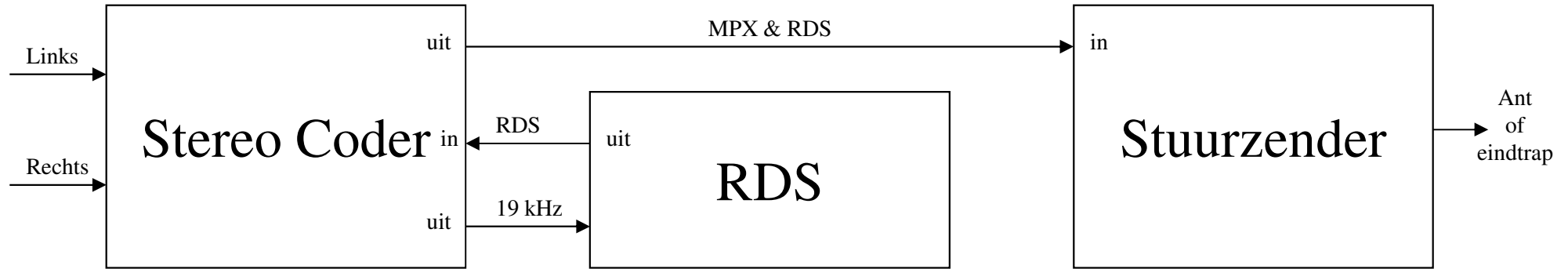


Selecteer de juiste com poort



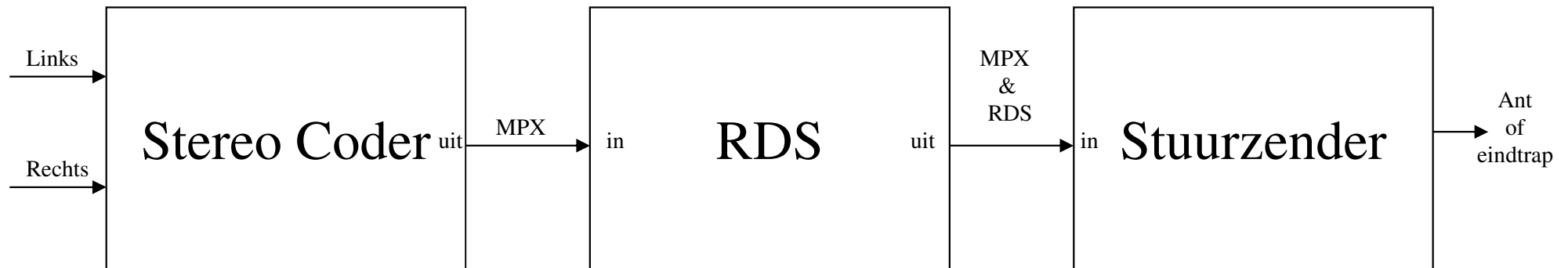
Software is nu gereed voor gebruik

Aansluiten met 19 kHz in



JP3 (loop) open en R1 afregelen totdat LED2 (19 kHz) gaat branden.
Eventueel R11 (uitgangslevel) nog afregelen

Aansluiten met MPX in



JP3 (loop) dicht en R1 afregelen op geen "helikopter geluid", LED2 gaat branden.
Indien LED2 niet gaat branden is het level van de pilot te laag
Eventueel R11 (uitgangslevel) nog afregelen

Benodigde kabel voor aansluiten RDS op de PC is een 1 op 1 kabel (ook wel muis verlengkabel genoemd).

Fase is in de software nog fijn te regelen!!

Belangrijk!!!

Na het verbinden van de RDS met de PC en het instellen van de juiste poort dient eerst op ieder tabblad “receive/ontvang” gedaan te worden.

Alle gegevens die in de RDS staan worden dan overgenomen in de software.

Maak niet teveel veranderingen in de software tegelijk. Gewoon 1 voor 1 en kijk iedere keer wat er gebeurt.

Na iedere verandering "send/verstuur" en "store/opslaan" doen.

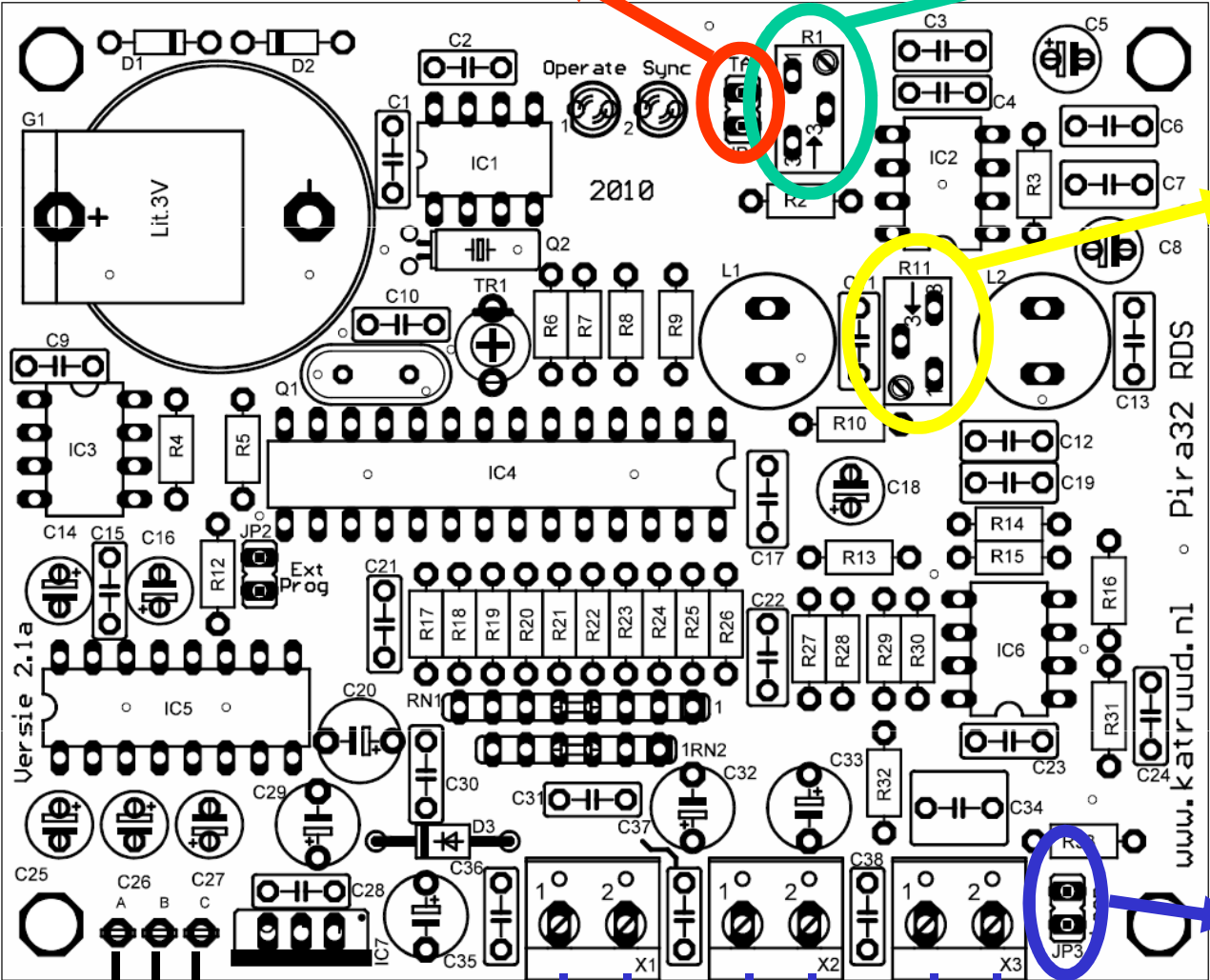
Geen pluggen en/of kabels aansluiten/wisselen als de RDS aanstaat. Altijd eerst de RDS uitzetten!!!

KatRuud/Pira32 RDS Version 2.1a

TA jumper

RDS sync

Output level



9 pole Sub-d female



Power 12Vdc

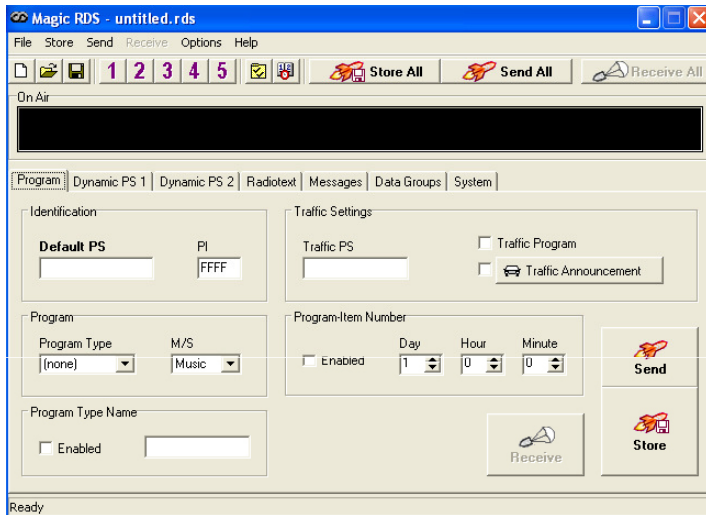
OUT

IN

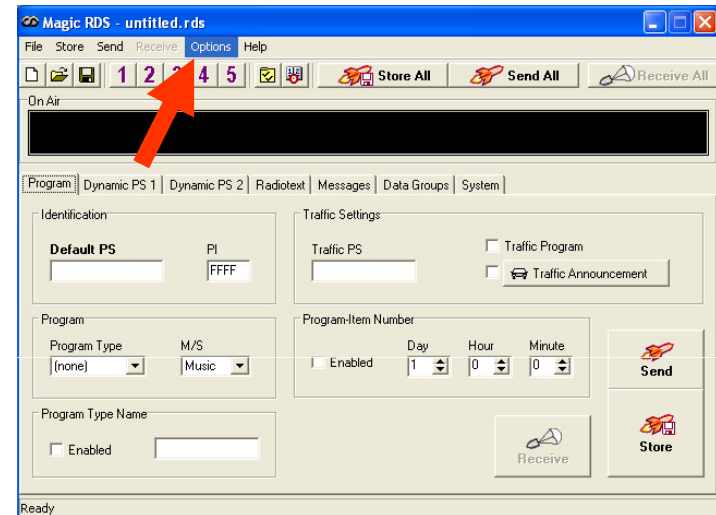
Loop jumper

Software starts in “demo mode”, you must select the right com port

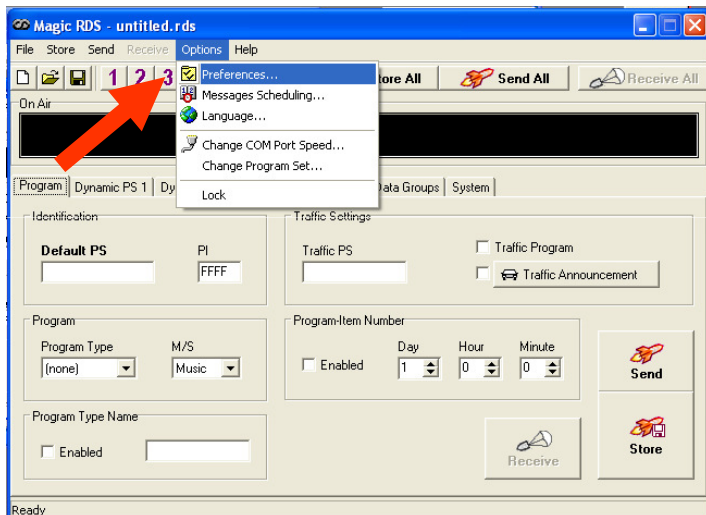
Start screen



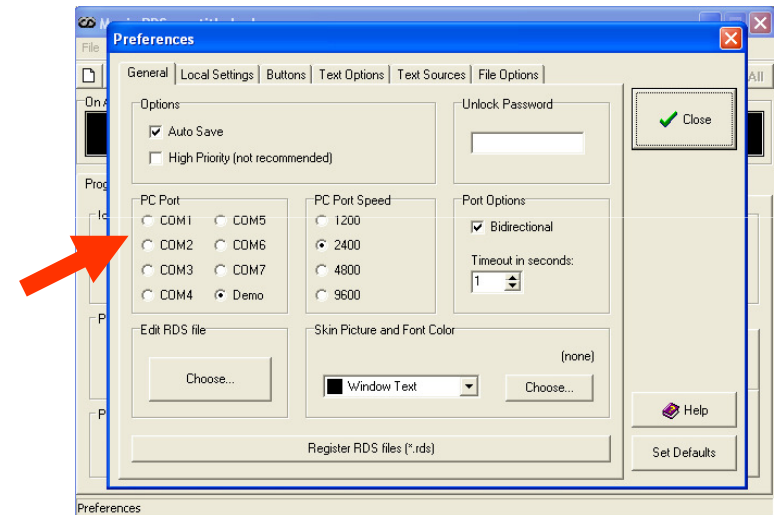
Go to options



select Preferences

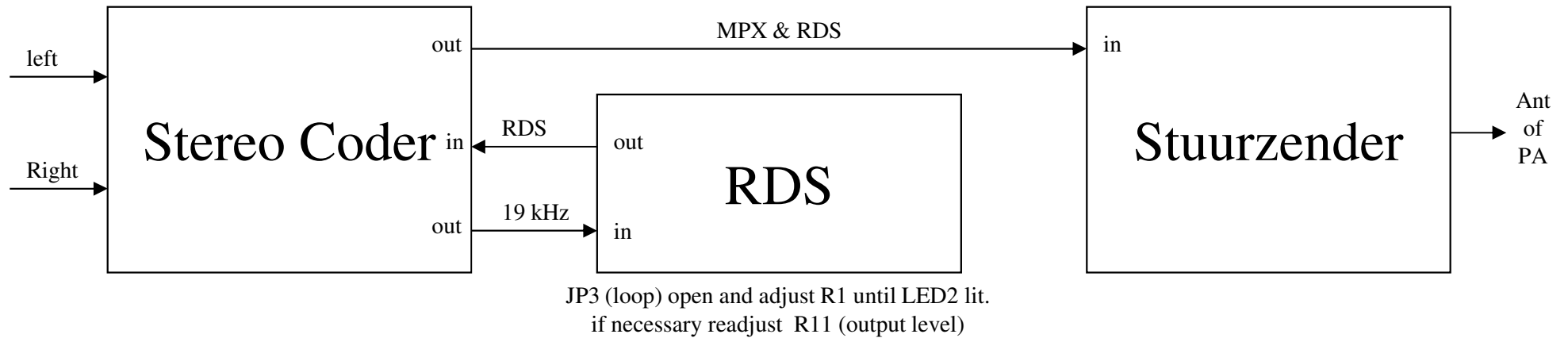


Select the right com port

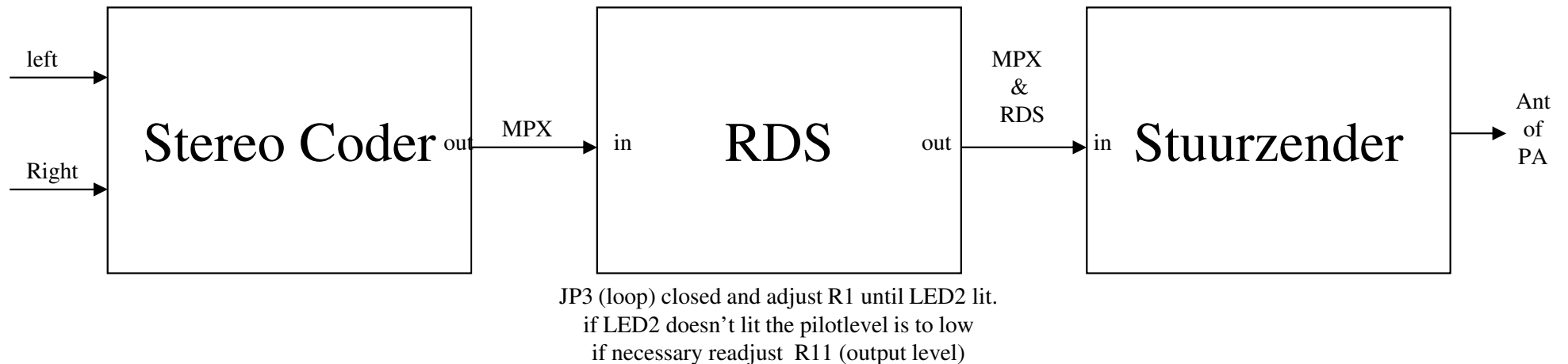


Software is now ready for use

Connections with 19 kHz in



Connections with MPX in



The cable to connect the RDS to the PC is a 1:1 cable (also mouse extension cable called).

Phase can be fine tuned in the software!!

Important!!

After you made the connection with the RDS to the PC and the selection of the right com port the first thing you have to do is click on the “receive” button on every page.

All data that's stored in the RDS will be transferred to the software (PC).

Don't make too many chances at ones.

Just one at the time so you can see what you're doing.

After every chance click the "send" and "store" button on the page.

(send => send to the RDS)

(store=> store in the RDS memory)

Don't connect or disconnect cables or connectors while the RDS is turned On !!!!!